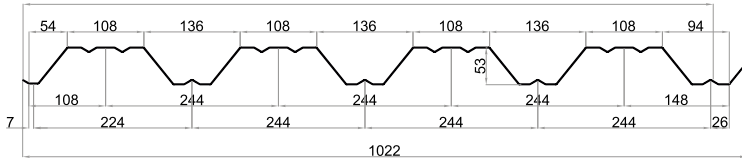


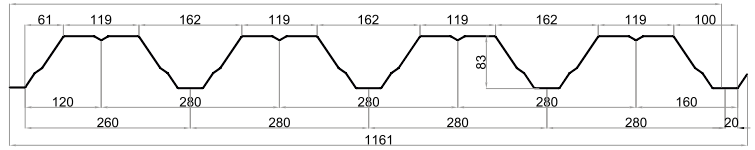
TOP 55/975*

Useful Width - 975 mm



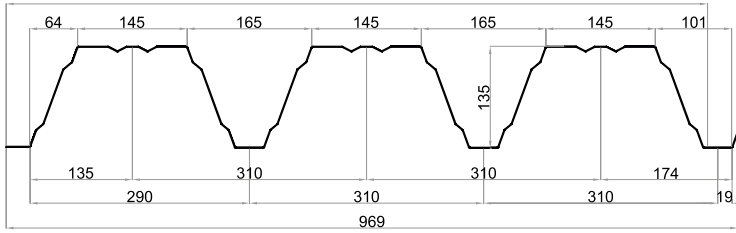
TOP 83/1120*

Useful Width - 1120 mm



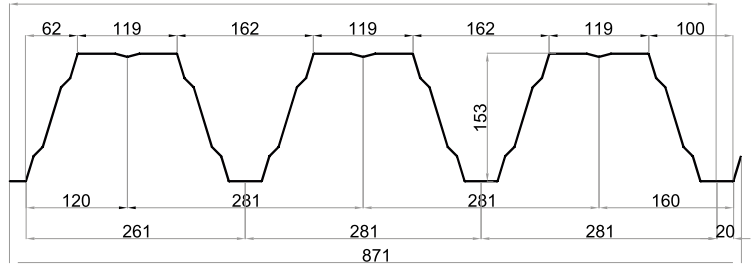
TOP 135/930*

Useful Width - 930 mm



TOP 153/840*

Useful Width - 840 mm

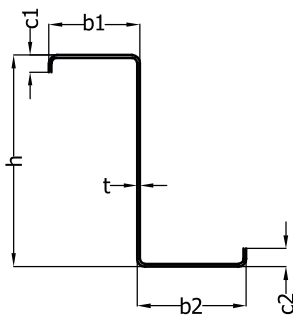


TOP STEEL

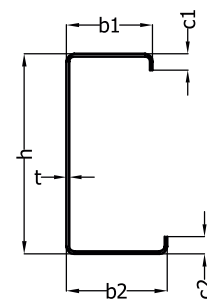
Zinc Profiles

Material Quality: S350GD + Z275. At demand, the profiles can be executed from other material types.

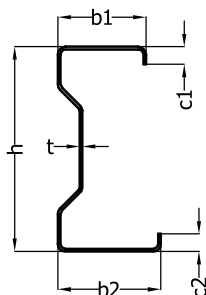
Zinc profile type Z



Zinc profile type C



Zinc profile type Σ



Zinc profile type U

